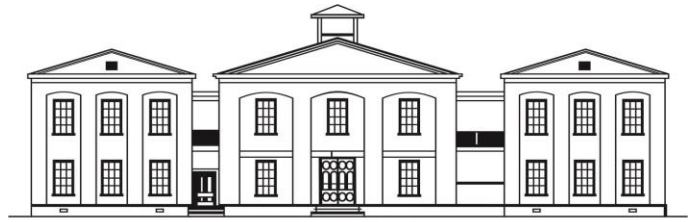


Massie Heritage Center

Historic Savannah Hike for Younger Scouts



Est. 1856

Begin at Massie and then walk to each location.

Scout Information

Name: _____

Pack/Troop: _____

Date: _____

Parent/Guardian/Leader Initials: _____

City Plan Room

Who greeted and became friends with James Oglethorpe when he arrived in 1733 with 114 English colonists on Yamacraw Bluff?

Circle the number of the correct answer below.

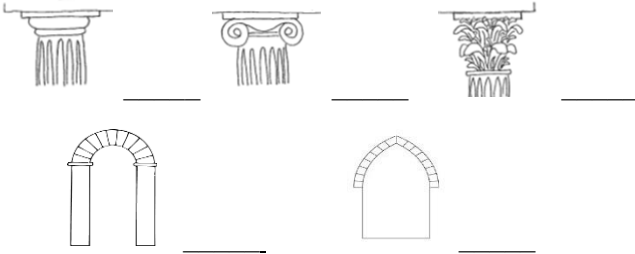
What is found at the **center** of the Savannah Ward diagram?

1. Houses 2. Squares 3. Public Buildings

Architecture Room

Match the columns and arches to their correct name.

- a. Ionic Column d. Corinthian Column
b. Doric Column e. Roman Arch
c. Gothic Arch



Preservation Room

What was produced at the Hermitage Plantation?



Native American Room

What type of houses did the Creek Indians build in our area?

How did the Native Americans make their canoes?

Heritage Classroom

Circle the number of each statement that is TRUE about the historic Massie School.

1. During the Civil War, Massie was used as a hospital.
2. The original student desks were burned by Union soldiers.
3. The staircase on the right was only for teachers.
4. Students had to stand up quietly next to their desk before answering a teacher's question.
5. Students went to the store and bought new books to use every year.

Hike through Historic Savannah to answer the following questions.

#1 Calhoun Square

What has been celebrated in this square every year since 1857?



#2 LaFayette Square

Savannah was founded in the year _____ and the fountain in this square was put here to celebrate the city's 250th birthday.

Name two animals you see on the fountain.

_____ & _____

#3 Cathedral of St. John



Look at the front of this church.



How many rose petals does the rose petal window have?

How many steeples does the church have?

#4 Colonial Park Cemetery

What are the brick structures in the cemetery called?

Circle the correct answer.

There are over 8,000 people buried in this cemetery, but there are only about 560 markers identifying who they are.

TRUE or FALSE

#5 Chippewa Square

Who is this a statue of?



What animal is on the four corners of the statue?

Why is the statue facing South?

#6 Madison Square

Who stayed at the Green-Meldrim house for 41 days during the Civil War? Circle the number of the correct answer.

1. President Abraham Lincoln
2. General William T. Sherman
3. Benjamin Franklin

Who is honored by the statue in the square?

In what battle did he die fighting in 1779?

#7 Monterey Square

What country did Count Casimir Pulaski come from?

What type of architecture is used on Temple Mickve Israel?

In 1733, the ship *William and Sarah* brought some Jewish settlers to Georgia, including Samuel Nunez. What was his occupation?

Circle the number of the correct answer.

1. Carpenter
2. Lawyer
3. Doctor

#8 Forsyth Park

Look at the white cast iron fountain.



How many birds do you see altogether?

_____ swans + _____ cranes = _____

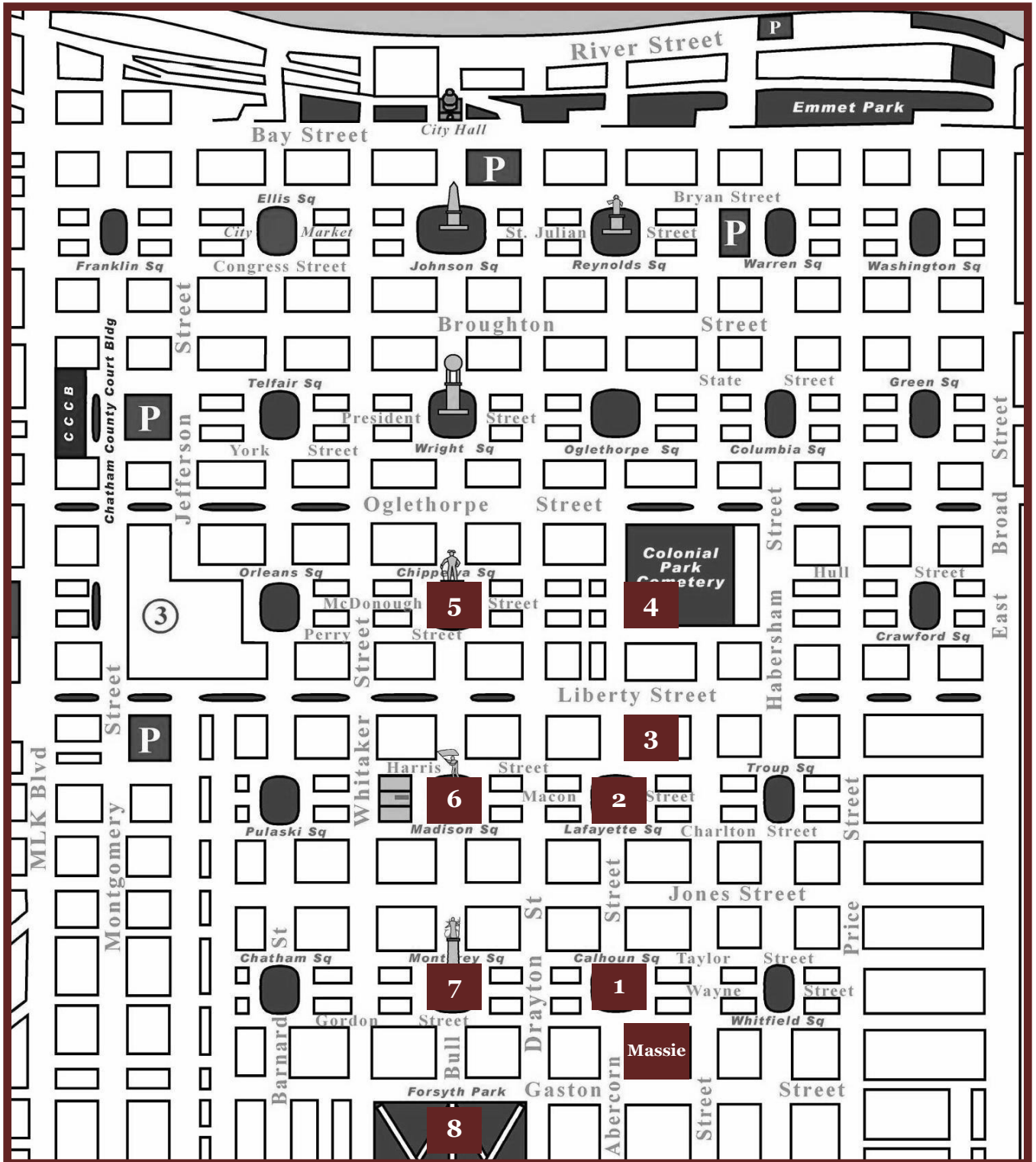
What is on top of the Confederate monument at the center of Forsyth Park?

#9 Review

Name one person you learned about today and tell why he or she was important to the history of Savannah.

#10 Thinking About What You Learned Today

What was your favorite thing that you saw or learned about today?



The People, Places and Things of Savannah

Y S L Y N G M T J Y Y U T Y C
O L O T A T K B Y N O O F E W
I W I I M M U Y O B U B P U K
I K R L R J A L B R E R J F O
J F X A E H O C I G O E O C L
Y J C T H C E S R H S T N T C
O J H I S S T N T A K R S O Z
I C I P H S E E Y D W O Z H M
D A C S G I L R I A F L E T O
J N R O Y G Z N A J G L J U S
O Y R H O W M W R U P E K B S
T O M O C H I C H I Q Y T U R
S L A A N X Y Q Q M A S S I E
C K C D F E O V H S A O E H A
S T G G T W A S H X I R U G X

COLONY
MOSS
SCAD
TELFAIR
TROLLEYS

HOSPITALITY
OAKS
SHERMAN
TOMOCHICHI
TYBEE

MASSIE
OGLETHORPE
SQUARES
TOURISTS
YAMACRAW